

E A S T
CAROLINA
UNIVERSITY

ASBESTOS AWARENESS



Presented by the Office of
Environmental Health and Safety

Safety and Environmental Compliance at ECU

**Environmental Health & Safety
210 East Fourth Street
328-6166**

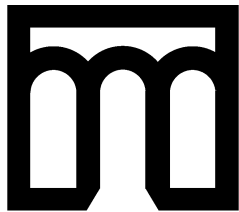


**EH&S Administration
Industrial Hygiene & Safety
Environmental Management
Workers' Compensation**

**Prospective Health
Warren Life Sciences
744-2070**



**Radiation Safety
Biological Safety
Infection Control
Employee Health**



E A S T
CAROLINA
UNIVERSITY

EH&S Web Page

The screenshot shows a Netscape browser window titled "EH&S Main Page - Netscape". The address bar contains "http://www.ecu.edu/oehs/". The browser's toolbar includes icons for Back, Forward, Reload, Home, Search, Netscape, Print, Security, Shop, and Stop. Below the toolbar, there are icons for Instant Message, WebMail, Contact, People, Yellow Pages, Download, Find Sites, and Channels. The main content area of the browser displays the following:

Office of Environmental Health & Safety

Emergency Procedures

EH&S Programs

- Art Safety
- Asbestos
- Ergonomics
- Fire and Life Safety
- Food Safety
- Hazardous Waste
- Laboratory Safety
- Workers' Compensation

About Us
Staff Directory
Service Request
Training Resources
Policies and Procedures

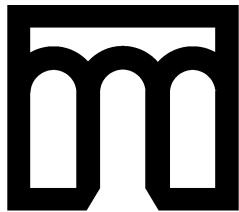
Navigation buttons: What's New, MSDS, Index, Search, Contact Us



Welcome to the Office of Environmental Health and Safety (EH&S) at East Carolina University.

EH&S reports to the Executive Vice Chancellor for Administration and Finance and is located at 210 E. 4th Street. EH&S operates in a collaborative effort with several university safety committees, the Office of Prospective Health and the campus community to develop policy manuals and training programs that ensure campus safety, environmental sustainability and regulatory compliance. EH&S program management and consultation areas include environmental management, safety, industrial hygiene, life safety, and workers' compensation. The

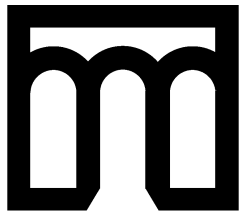
Document: Done



E A S T
CAROLINA
UNIVERSITY

TRAINING OUTLINE

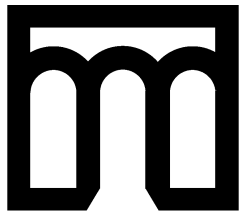
- ◆ **What is Asbestos?**
- ◆ **Health Effects Associated with Exposure**
- ◆ **Defense Mechanisms**
- ◆ **Smoking**
- ◆ **Location of ACBM and ACM**
- ◆ **Recognition of Damage**
- ◆ **Emergency Procedures and Contacts**
- ◆ **Rules and Regulations**
- ◆ **Abatement**
- ◆ **Operations & Maintenance (O&M)**
- ◆ **Questions and TEST**



E A S T
CAROLINA
UNIVERSITY

Training Requirements

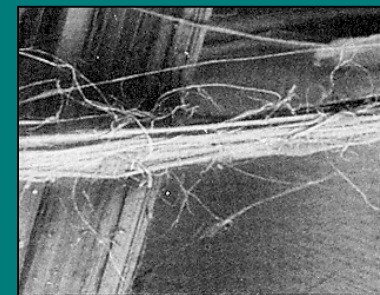
- ◆ 2 Hour Annual Awareness Training
- ◆ Asbestos-Uses and Forms
- ◆ Location of ACBM
- ◆ Recognition of Damage
- ◆ Names and Telephone Numbers of Program Manager and Emergency Personnel
- ◆ 14 Additional Hours for O&M Personnel
- ◆ www.video.google.com/videoplay?docid=1175739291888112589

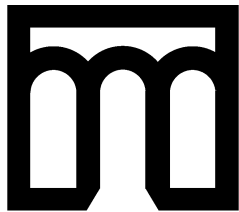


E A S T
CAROLINA
UNIVERSITY

WHAT IS ASBESTOS?

- ◆ Naturally Occurring Mineral
- ◆ Chrysotile, Amosite, and Crocidolite
- ◆ >3,000 Building Products
- ◆ Surfacing Material, TSI and Miscellaneous
- ◆ Desirable Physical Properties
- ◆ ACM >1% Asbestos
- ◆ Laboratory Analysis

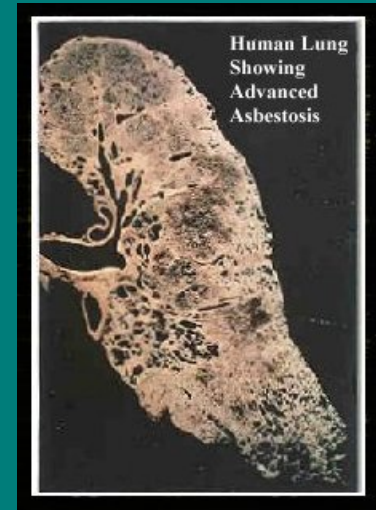


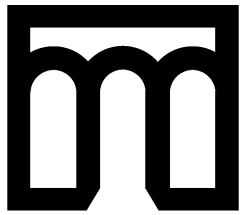


E A S T
CAROLINA
UNIVERSITY

HEALTH HAZARDS

- ◆ Inhalation Hazard
- ◆ Must Be Disturbed
- ◆ Asbestosis
- ◆ Lung Cancer
- ◆ Mesothelioma
- ◆ Latency Period (15 to 40 years)
- ◆ Risk - Level and Duration of Exposure



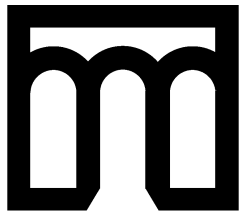


E A S T
CAROLINA
UNIVERSITY

DEFENSE MECHANISMS

- ◆ **Nose and Mouth**
- ◆ **Mucous Lined Breathing Passages**
- ◆ **Cilia**

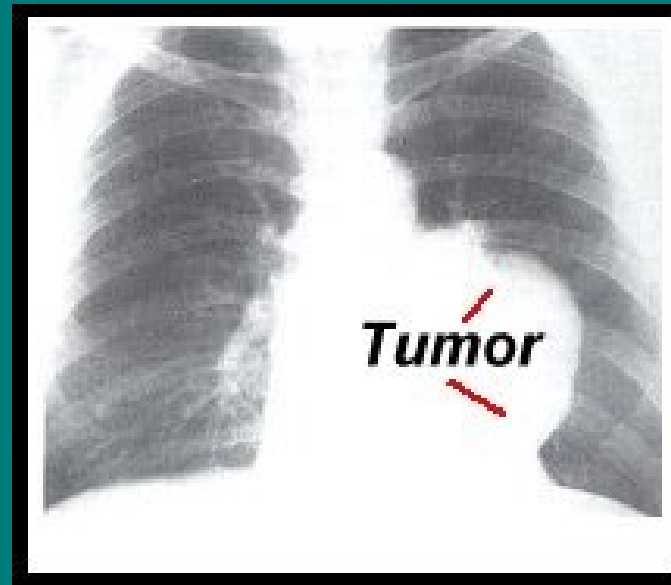


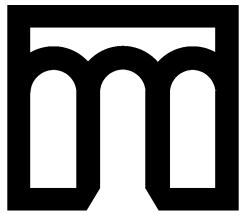


E A S T
CAROLINA
UNIVERSITY

SMOKING

- ◆ Impairs Body's Defense Mechanism
- ◆ Increased Risk of Lung Cancer



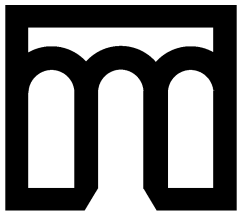


E A S T
CAROLINA
UNIVERSITY

LOCATION OF ACBM

- ◆ Surfacing Material
- ◆ TSI
- ◆ Miscellaneous
- ◆ PACM
- ◆ Sample Inventory
- ◆ Accredited Inspectors
- ◆ Periodic Inspections

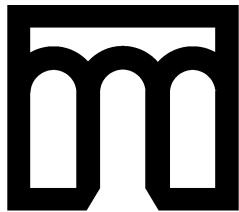




**E A S T
CAROLINA
UNIVERSITY**

SUSPECT MATERIAL

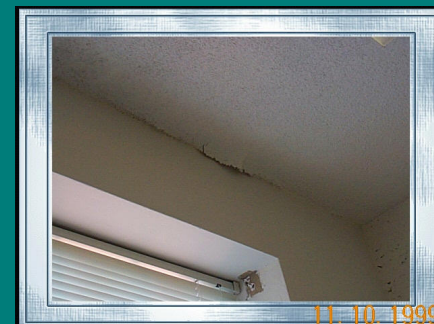
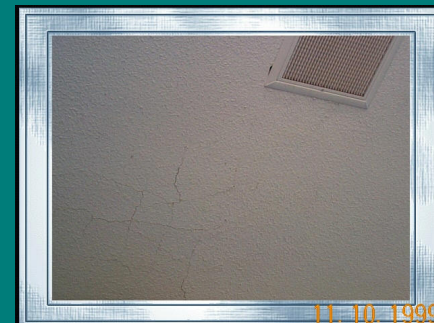
- ◆ Before starting a project make sure that asbestos-containing material will not be disturbed
- ◆ Assume all suspect material contains asbestos
- ◆ Reference list/contact EH&S
- ◆ If you encounter suspect material when performing work **STOP** immediately and contact EH&S before proceeding



E A S T
CAROLINA
UNIVERSITY

RECOGNITION OF DAMAGE

- ◆ Friability
- ◆ Water Damage
- ◆ Delamination
- ◆ Deterioration
- ◆ Physical Damage
- ◆ Minor Incidents
- ◆ Major Incidents







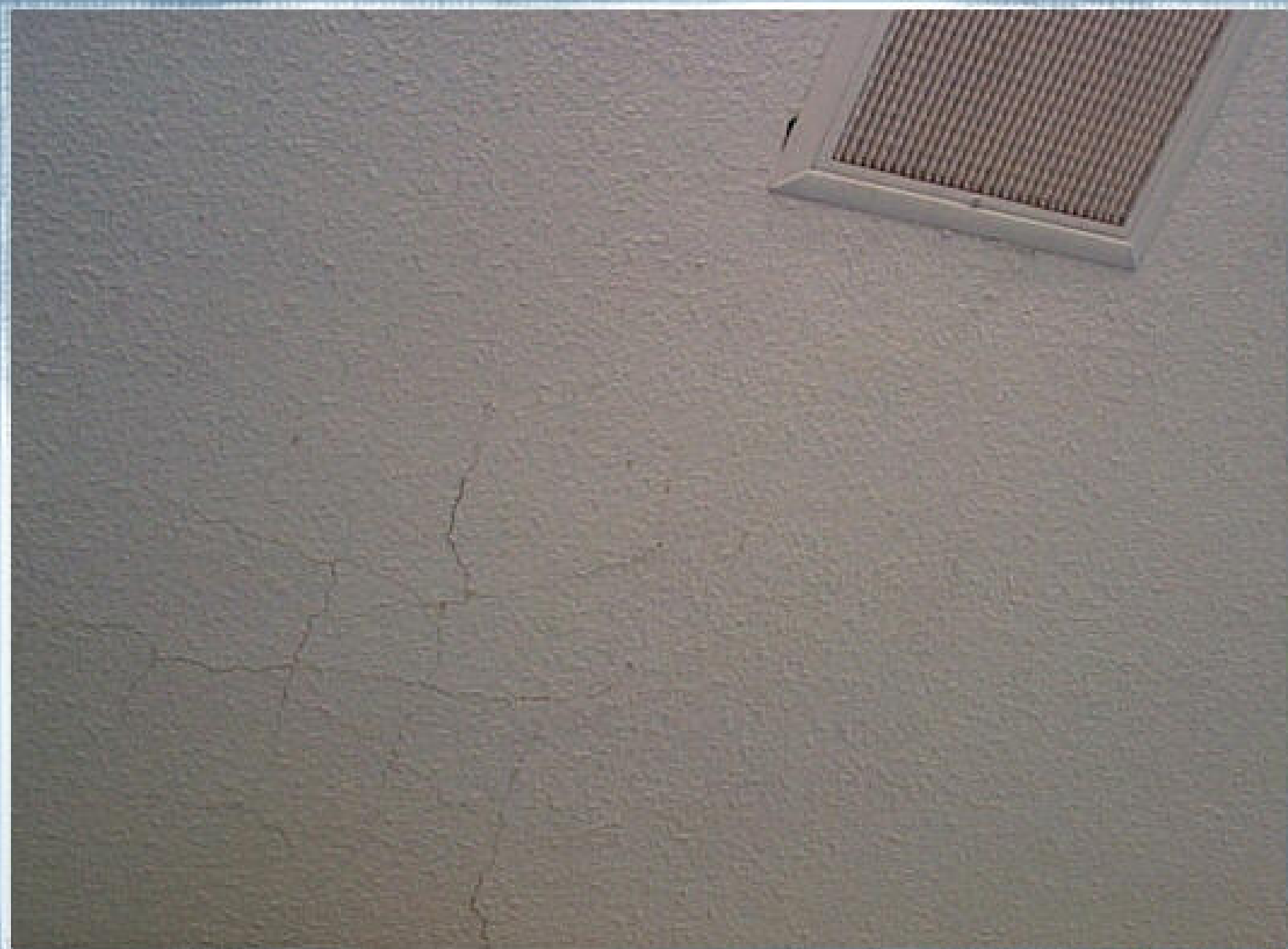
11. 10. 1999



11. 10. 1999



11. 10. 1999



11.10.1999



1/2 NOMINAL WALL
HP 77
3/4 ID X 1/2 NOM

4.19.2000





6. 6. 2000



6. 6. 2000



2. 28. 2000



6.6.2000

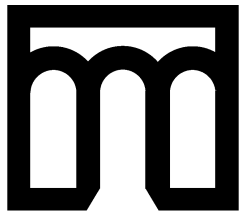
EXIT

2. 28. 2000



4.19.2000

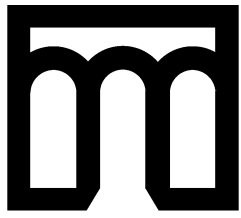
008



E A S T
CAROLINA
UNIVERSITY

EMERGENCY PROCEDURES

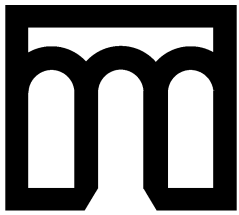
- ◆ Major Fiber Release (> 3 sq.ft)
- ◆ Stop Work Immediately
- ◆ Do Not Attempt Clean-up
- ◆ Secure Area
- ◆ Notify Supervisor
- ◆ Contact Emergency Personnel
- ◆ Do Not Reenter Area Until Instructed To Do So



**E A S T
CAROLINA
UNIVERSITY**

RULES AND REGULATIONS

- ◆ **OSHA**
- ◆ **EPA**
- ◆ **NC Health Hazards
Control Unit**
- ◆ **ECU Policy**



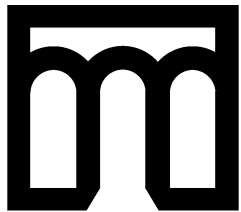
E A S T
CAROLINA
UNIVERSITY

ACBM MANAGEMENT

◆ Abatement

◆ O&M





E A S T
CAROLINA
UNIVERSITY

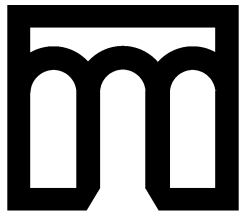
ABATEMENT ACTIVITIES

◆ Encapsulation

◆ Enclosure

◆ Removal



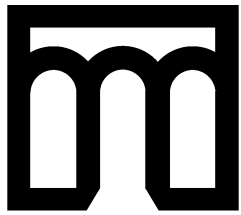


E A S T
CAROLINA
UNIVERSITY

ABATEMENT ACTIVITIES

- ◆ Survey to Identify ACM
- ◆ Project Designer
- ◆ Occupant Notification
- ◆ Work Area Containment
- ◆ Posting of Work Areas
- ◆ Engineering Controls/PPE
- ◆ Air Monitoring
- ◆ Accredited Contractor
- ◆ ECU Oversight





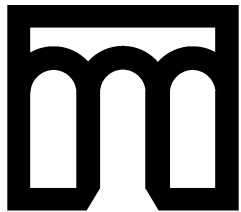
E A S T
CAROLINA
UNIVERSITY

O&M ACTIVITIES

- ◆ In-House Small Scale, Short Duration Projects
- ◆ Maintenance or Repair Only
- ◆ 160 Square Feet/260 Linear Feet/35 Cubic Feet
- ◆ Trained Personnel
- ◆ Schedule and Coordinate with EH&S prior to activity (including floor tile and other non-friable material)

Quiz

- ◆ **What is Asbestos?**
- ◆ **Name 3 Building Materials That May Contain Asbestos?**
- ◆ **Name 3 Diseases Associated With Asbestos Exposure?**
- ◆ **When is Asbestos a Health Hazard?**
- ◆ **What Greatly Increases the Risk of Lung Cancer?**
- ◆ **What Should You Do If You Identify Damaged ACM?**



**E A S T
CAROLINA
UNIVERSITY**

Safety and Environmental Compliance at ECU

QUESTIONS?



Environmental Health & Safety
210 East Fourth Street
328-6166
safety@mail.ecu.edu



**Prospective Health
Warren Life Sciences**
744-2070